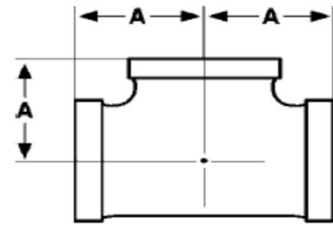




Straight Tee - Threaded

150# Malleable Iron, Galvanized



Inches / Pounds

Part #	Size	A	Approximate Weight (in Lbs.)
KT.125MIG	1/8	0.69	0.09
KT.25MIG	1/4	0.81	0.15
KT.375MIG	3/8	0.95	0.23
KT.5MIG	1/2	1.12	0.36
KT.75MIG	3/4	1.31	0.56
KT1MIG	1	1.50	0.90
KT1.25MIG	1 1/4	1.75	1.30
KT1.5MIG	1 1/2	1.94	1.73
KT2MIG	2	2.25	2.63
KT2.5MIG	2 1/2	2.70	4.90
KT3MIG	3	3.08	7.10
KT3.5MIG	3 1/2	3.42	9.00
KT4MIG	4	3.79	11.30
KT5MIG	5	4.50	19.40
KT6MIG	6	5.13	25.50
KT8MIG	8	6.50	44.70

***Malleable Castings conform to ASTM A197**

***Malleable Fitting Dimensions conform to ASME B16.3**

***NPT Threads on all fittings conform to ASME B1.20.1**

***Class 150 fittings are UL listed and FM approved at 300 psi**

***Hot-Dipped Galvanized Fittings conform to ASTM A153**